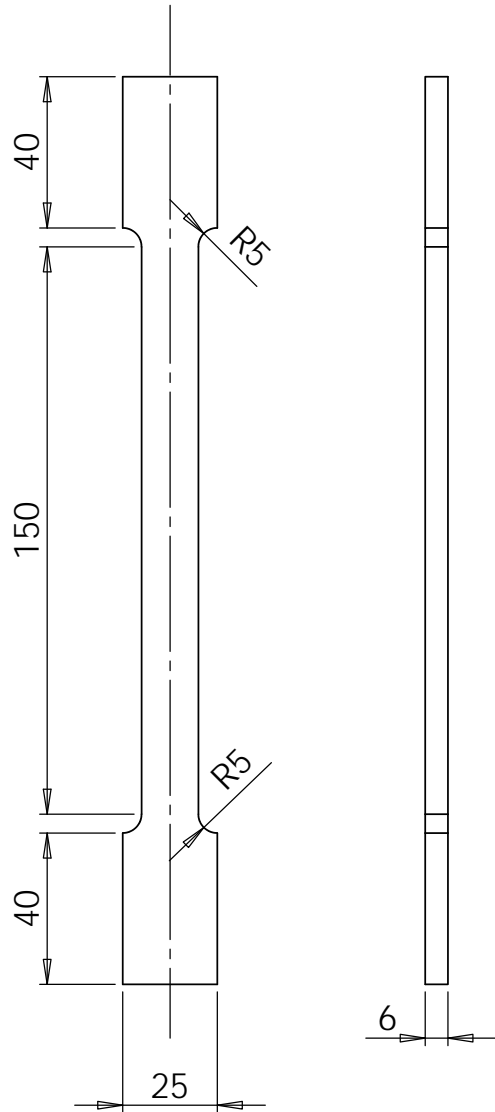
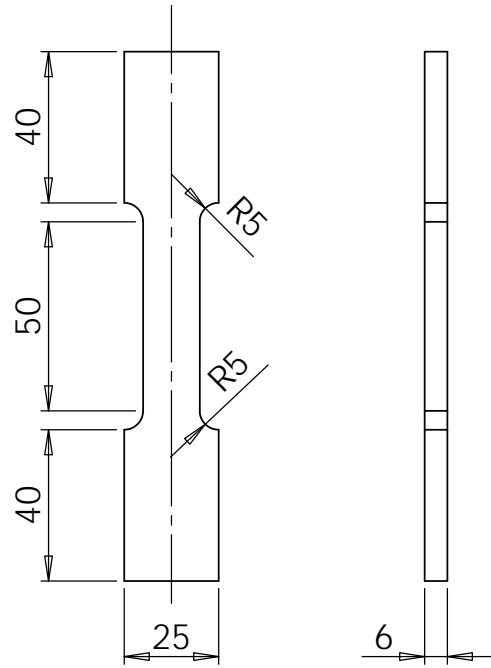


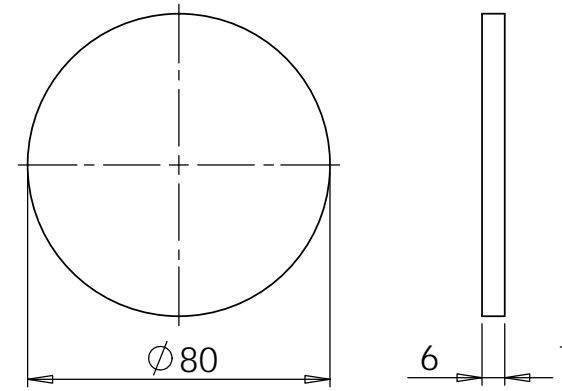
Dogbone - long



Dogbone - short



Brazilian Disc



UNLESS OTHERWISE SPECIFIED: DIMENSIONS ARE IN MILLIMETERS		SURFCE FINISH: 1.6 µm (N7)		DEBUR AND BREAK SHARP EDGES		DO NOT SCALE DRAWING		REVISION	
TOLERANCES: ± 50 µm									
	NAME	DATE				TITLE:			
DRAWN	Richard Fruehmann	09.08.2011				Specimens for experimental mechanics course 2012			
CHK'D									
APPV'D									
MFG									
Q.A					MATERIAL:	DWG NO.		A4	
					Aluminium Al 6081 T6	Drawing 1			
					WEIGHT:	SCALE: 1:2		SHEET 1 OF 1	